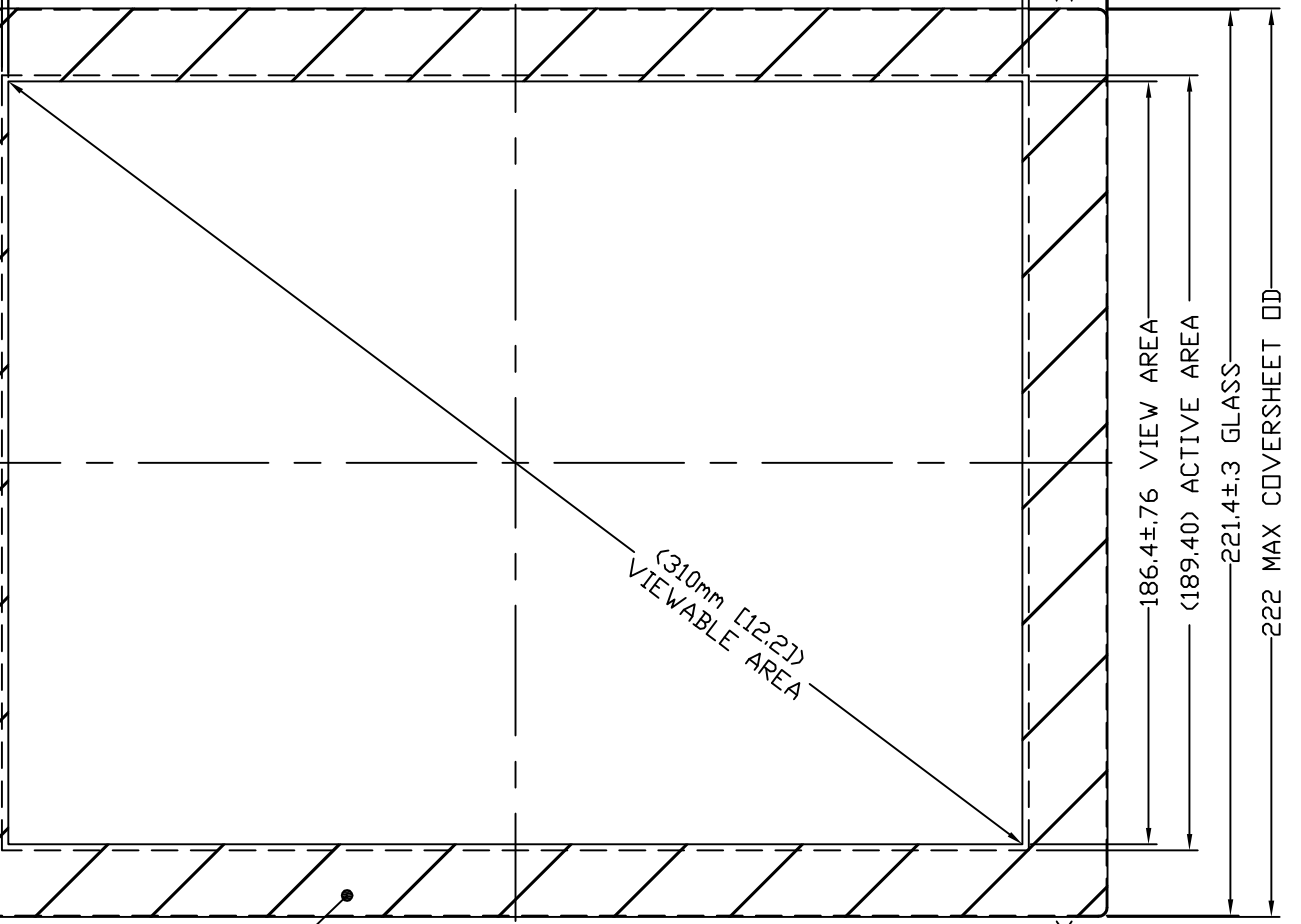
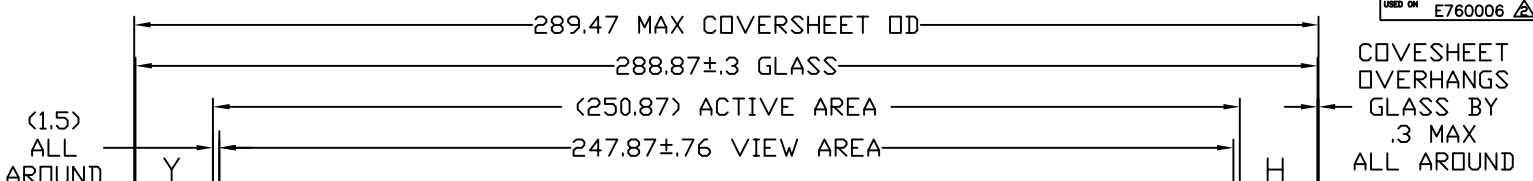
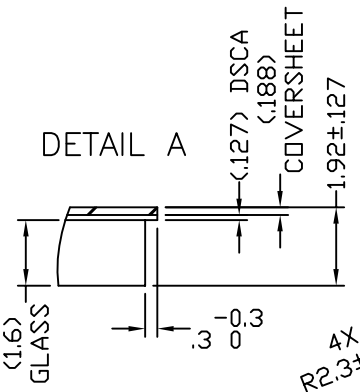
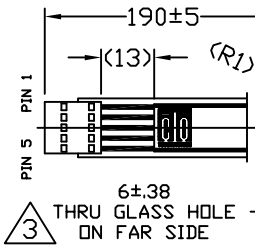
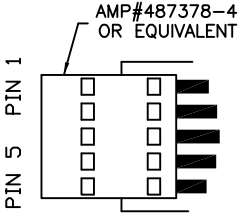


THIS DRAWING IS A CONTROLLED DOCUMENT. (REV NO) MS601169

CONNECTOR PINOUT	
PIN NO.	DESIGNATION
1	H
2	X
3	S
4	Y
5	L



THIS INFORMATION IS CONFIDENTIAL AND PROPRIETARY TO ELO TOUCH SOLUTIONS INC. AND ITS LICENSEES. SUBSTANTIALLY THE SAME INFORMATION IS NOT TO BE DISCLOSED TO ANYONE OTHER THAN ELO PERSONNEL WITHOUT AUTHORIZATION FROM ELO TOUCH SOLUTIONS INC.

LOC 08
DIST 08

NOTES:
1. GLASS THICKNESS 1.6mm NOMINAL.
2. FINISHED PART THICKNESS 1.92mm±0.127MM.

P	LTR	REVISION RECORD	DATE	DM	APD
B		REVISED PER ECO-12-014540 ELO TITLE BLOCK WAS TE	08/31/12	DI	
A		ECO-11-021669: INITIAL RELEASE	10/28/11	QC	QC

DIMENSIONS: mm		TOLERANCES UNLESS OTHERWISE SPECIFIED:	
		0 PLC ± 1	
		1 PLC ± 2	
		2 PLC ± 3	
		3 PLC ± 4	
		4 PLC ± 5	

DM	Q. CHUNG	05/06/11	MATERIAL	RESISTIVE (ACCU TOUCH)	HEAT TREAT	N/A							
CHK						N/A							
APD	Q. CHUNG	08/19/11											
NAME	MARKETING DRAWING												
SCALE			1:1	SIZE	A2	DRAWING NO	MS601169	SHEET	1	OF	1	REV	B